



3 Bed House - Detached

22 Bakehouse Lane, Ockbrook, Derby DE72 3RH
Offers Around £495,000 Freehold

-  3
-  2
-  1
-  C

- Highly Appealing, Extended Detached Home in Ockbrook Village
- Close to Cricket Grounds - Far-Reaching Views
- Sought After Position in Ockbrook with Delightful Countryside Walks
- Entrance Hall & Cloakroom/WC
- Spacious Lounge
- Extended Living Kitchen/Dining/Family Room
- Three Bedrooms & Family Bathroom
- Landscaped Gardens
- Block Paved Driveway for Several Cars (Front & Rear Driveway)
- Two Garages/Workshop

A highly appealing extended detached home located close to local cricket grounds, this residence is surrounded by picturesque countryside, offering far-reaching views and scenic walks.

The heart of the home is undoubtedly the extended living kitchen/dining/family room, which creates a warm and welcoming atmosphere.. This open-plan area is designed to cater to modern living, allowing for seamless interaction between cooking, dining, and leisure activities.

Outside, the home benefits from both front and rear driveways, providing easy access and ample parking. Additionally, the presence of two garages or workshops offers excellent potential for storage or hobbies, making this property a versatile choice for those with varied interests.

The Location

Ockbrook is a very sought after village location situated some four miles east of Derby City centre and benefits from a reputable primary school, Post Office, cricket ground and various charming inns, wine bars and The Apple Tree gift shop and tearoom. It is well placed for the A52 leading to the M1 motorway, Derby, Nottingham, Leicester and East Midlands Airport. The nearby open countryside offers some delightful scenery and country walks.

Accommodation

Ground Floor

Entrance Hall

20'2" x 5'9" (6.15 x 1.77)

With study area with entrance door, tiled effect flooring, radiator, spotlights to ceiling, two double glazed windows, staircase leading to first floor with hand rail and smoke alarm.

Cloakroom

4'11" x 2'9" (1.50 x 0.84)

With low level WC, fitted wash basin with chrome fittings with fitted base cupboard underneath, matching tiled effect flooring, radiator, tile splashbacks, extractor fan, spotlights to ceiling, double glazed window with fitted blind and internal panelled door with chrome fittings.

Lounge

17'6" x 13'3" (5.34 x 4.06)

With chimney breast with fireplace alcove, radiator, coving to ceiling, spotlights to ceiling, private aspect to front, large double glazed window with fitted blind and internal glazed door with chrome fittings.



Living Kitchen/Dining/Family Room

18'8" x 15'1" (5.71 x 4.61)



Family Area

With radiator, spotlights to ceiling, wood flooring and open space leading into dining and kitchen areas.



Dining Area

With wood flooring, feature double glazed lantern style window, spotlights to ceiling, built-in ceiling speakers, panelling to wall with TV alcove space, open space leading to family area and kitchen area and double glazed French doors opening onto garden.



Kitchen Area

With one and a half stainless steel sink unit with mixer tap, wall and base fitted units with attractive matching worktops, built-in four ring induction hob with stainless steel extractor hood over, built-in electric fan assisted oven, microwave alcove space, concealed space for washing machine and tumble dryer, integrated dishwasher, continuation of the matching worktops forming a useful breakfast bar area, matching tiled effect flooring, radiator, spotlights to ceiling, feature double glazed lantern style window, double glazed window with fitted blind overlooking rear garden, concealed worktop lights, wood flooring, integrated large fridge, integrated large freezer and glazed internal door with chrome fittings.



First Floor Landing

8'3" x 5'9" (2.54 x 1.76)

With built-in cupboard housing the central heating boiler, radiator, spotlights to ceiling, smoke alarm, access to roof space and double glazed window to side with fitted blind.

Bedroom One

11'5" x 8'11" (3.48 x 2.72)

With built-in wardrobes, panelling to wall, radiator, double glazed window with fitted blind with aspect to rear and internal panelled door with chrome fittings.



Bedroom Two

11'6" x 10'6" (3.52 x 3.22)

With feature wallpaper wall, radiator, private aspect to front with countryside views, large double glazed window with fitted blind and internal panelled door with chrome fittings.



Bedroom Three

7'10" x 7'6" (2.40 x 2.30)

With radiator, private aspect to front with countryside views, double glazed window with fitted blind to front and internal door with chrome fittings.



Family Bathroom

7'10" x 5'7" (2.40 x 1.71)

With bath with chrome fittings with chrome shower over with shower screen door, fitted wash basin with chrome fittings and fitted base cupboard underneath, low level WC, fully tiled walls, spotlights to ceiling, radiator, extractor fan, double glazed window to rear with fitted blind and internal panelled door with chrome fittings.



Front Garden

The property is nicely set back from the pavement edge and incorporates a block paved driveway providing car standing spaces and complemented by raised Indian stone paving with inset borders and Laurel hedgerow.

Rear Garden

To the rear of the property is a generous sized garden laid to lawn with inset beds with sleepers and spacious patio/terrace area providing a pleasant sitting out and entertaining space and enclosed by fencing.



Front Driveway

A block paved driveway provides car standing spaces for several cars and leads to an extended, generous sized garage/workshop.



Garage One

20'8" x 10'1" (6.32 x 3.08)

With concrete floor, power, lighting, roll up door, side personnel door, and integral door giving access to garage two.



Garage Two

17'4" x 10'1" (5.30 x 3.08)

With concrete floor, power, lighting and roll up door.



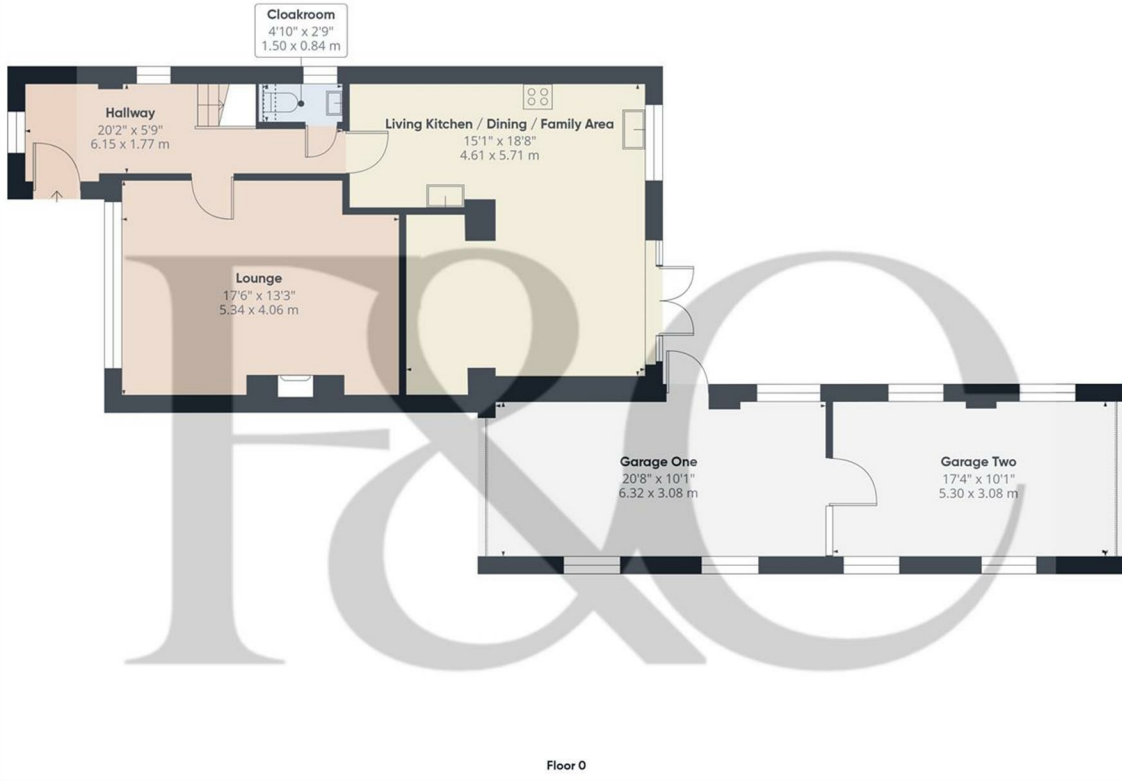
Rear Driveway

The property benefits from a rear access drive with gates and provides further car standing space and also gives access to the two garages/workshop.

Council Tax Band - E

Erewash





Approximate total area⁽¹⁾
1039 ft²
96.6 m²

Reduced headroom
2 ft²
0.2 m²

(1) Excluding balconies and terraces

Reduced headroom
..... Below 5 ft/1.5 m

Calculations reference the RICS IPMS 3C standard. Measurements are approximate and not to scale. This floor plan is intended for illustration only.

GIRAFFE360

These particulars do not constitute an offer or a contract neither do they form part of an offer or contract. The vendor does not make or give and Messrs. Fletcher & Company nor any person employed has any authority to make or give any representation or warranty, written or oral, in relation to this property. Whilst we endeavour to make our sales details accurate and reliable, if there is any point which is of particular importance to you, please contact the office and we will be pleased to check the information for you, particularly if contemplating travelling some distance to view the property. None of the services or appliances to the property have been tested and any prospective purchasers should satisfy themselves as to their adequacy prior to committing themselves to purchase.



Floor 1


Approximate total area⁽¹⁾
402 ft²
37.4 m²

(1) Excluding balconies and terraces


Calculations reference the RiCS IPMS 3C standard. Measurements are approximate and not to scale. This floor plan is intended for illustration only.

GIRAFFE360

Energy Efficiency Rating

	Current	Potential
<i>Very energy efficient - lower running costs</i>		
(92 plus) A		
(81-91) B		
(69-80) C		
(55-68) D		
(39-54) E		
(21-38) F		
(1-20) G		
<i>Not energy efficient - higher running costs</i>		
	73	83
England & Wales	EU Directive 2002/91/EC 	

Environmental Impact (CO₂) Rating

	Current	Potential
<i>Very environmentally friendly - lower CO₂ emissions</i>		
(92 plus) A		
(81-91) B		
(69-80) C		
(55-68) D		
(39-54) E		
(21-38) F		
(1-20) G		
<i>Not environmentally friendly - higher CO₂ emissions</i>		
England & Wales	EU Directive 2002/91/EC 	

These particulars do not constitute an offer or a contract neither do they form part of an offer or contract. The vendor does not make or give and Messrs. Fletcher & Company nor any person employed has any authority to make or give any representation or warranty, written or oral, in relation to this property. Whilst we endeavour to make our sales details accurate and reliable, if there is any point which is of particular importance to you, please contact the office and we will be pleased to check the information for you, particularly if contemplating travelling some distance to view the property. None of the services or appliances to the property have been tested and any prospective purchasers should satisfy themselves as to their adequacy prior to committing themselves to purchase.